A black and white photograph of a large, ornate brick building with Gothic-style architecture, featuring tall spires and arched windows. The building is partially obscured by the branches of trees in the foreground. A semi-transparent blue banner is overlaid across the middle of the image, containing the text.

University of Florida Police Department

Community Services Division and the Office of Victim Services



University of Florida Police Department



- Available 24/7/365
- (352) 392-1111
- www.police.ufl.edu
- Organized in familiar fashion
- 90 sworn state officers
- State, Nationally, and Internationally Accredited
- Full range of services

Emergency Preparedness

- In the event of an emergency, whether a natural or man-made occurrence, UF and UFPD have preparedness plans in place
- UF has a text message notification system that all students are registered for that will provide them with information needed in an emergency



> Office of the Chief

> Media/Public Information

▼ Jeanne Clery Act and
Emergency Notification
System Information

Crime Log

CSA Training Video

Emergency Notification System
Information

Fire Log

Together For a Safe Campus

UF Faculty & Staff 911 Guide

News and
Announcements

Crime Reports

- Information about recent crime on campus is available through the Crime Log link under the Jeanne Clery Act and Emergency Notification System Information on UFPD's website at www.police.ufl.edu
- Crime Reports, which provides information about crime around campus, is available at www.police.ufl.edu/crime-map/



Crime Triangle



- Opportunity is the only element YOU CAN CONTROL
- Most crimes are committed simply because the opportunity is there
- Reduce opportunity = reduce crime!
- It's only common sense...

Property Security

- Register your property with UFPD
- Do not leave doors unlocked
- Do not leave property unattended
- Lock your property
- Mark your property
- Do not allow persons you do not know into re halls
- If you see someone or something suspicious, contact the University of Florida Police Department immediately at **352-392-1111**



Operation Identification

- FREE
- Register any item with a serial number (bicycle, laptop, mp3 player, tablet, etc.)
- Record make, model, description, and serial number, as well as MAC address and IP address for wireless devices
- May be done online (no bicycles) or in person at the Community Services Division
- Free engraving available



Front Door Software

- FREE
- Laptop theft prevention, information protection, and property recovery software
- Remote lockdown
- Audible and visual “Stolen Laptop” messages
- Track laptop with Google Maps

www.frontdoorsoftware.com/UFL



Personal Safety

- Be aware of your surroundings. Stay alert.
- Trust your instincts. If something doesn't seem right, it probably isn't.
- Use the buddy system.
- Look for the Emergency Blue Light Phones throughout campus.
- Report suspicious incidents/persons immediately to law enforcement. If it is suspicious to you, it is suspicious to us.
- In an emergency, call 911.



Rape Aggression Defense (R.A.D.)



- Course includes lecture, discussion, and self defense techniques
- 12 hours over 3 or 4 days
- Good for women of all ages and abilities
- FREE

“To develop and enhance the options of self defense, so they may become viable considerations to the woman who is attacked.”

Voluntary Inspection Program (V.I.P.)

- An apartment complex manager may request an inspection
- Specially trained law enforcement officer(s) conduct the inspection using standards created by the Office of the Attorney General
- Upon successful completion, a certificate valid for two years is issued to the complex
- FREE



Student Nighttime Auxiliary Patrol (S.N.A.P.)

- Use the SNAP UF app
- Free safe escort anywhere on campus
- Staffed by UF students



Hours of Operation 7 Days a Week

Spring and Fall Semesters

6:30 pm – 3:00 am

Summer Semesters

8:30 pm – 3:00 am



Emergency Blue Phones

- Located in all parking areas
 - Parking lots
 - Every floor of parking garages
- Located on the grounds of all campus residence halls and most academic buildings
- Automatically connects you to police dispatch who will know your location
- Phone locations are available through the online campus map by selecting the “campus safety” feature at campusmap.ufl.edu





S.C.O.P.E.

Student Community Oriented Policing Effort (SCOPE)

- Implemented to obtain a better understanding and working relationship between the University of Florida Police Department and the University of Florida Community
- One patrol officer from each shift is assigned to a residence hall
- Some business and academic buildings and the libraries are assigned one officer
- All Greek houses are assigned one officer



Pedestrian Concerns



- Always use crosswalks
- Always look before crossing
- Make eye contact with drivers to ensure they are yielding to you
- Obey “walk/don’t walk” signs at intersections
- Remember: although cars and bikes are supposed to stop for people in crosswalks, they don’t always do so
- Be responsible for your safety

Bicycles



- Obey all traffic laws (FSS 316.2065)
 - Use lights at night
 - Do not wear headphones
 - Always park at and lock your bicycle to a bicycle rack (the u-lock style is best)
- Secure the lock through the front wheel, around the frame, and to the bike rack
 - Do not abandon bicycles at bike racks
 - To register your bicycle, visit the police station or contact any officer on campus



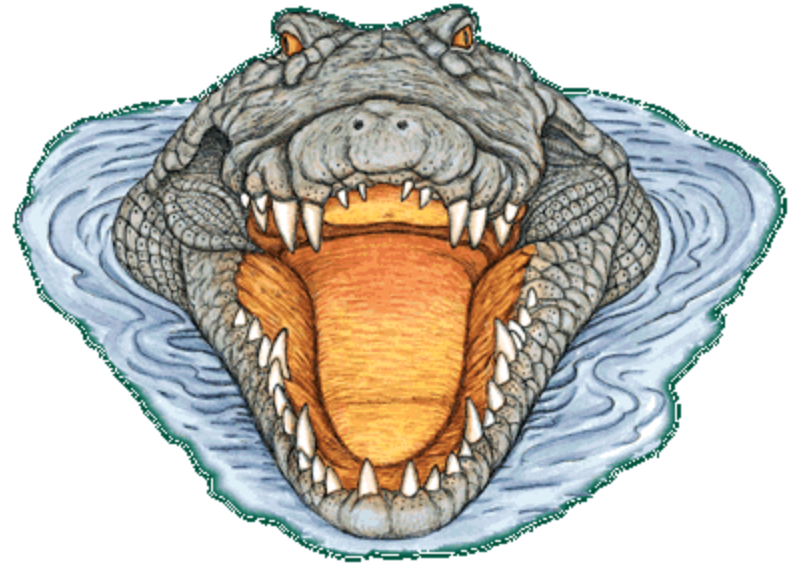
Scooter Laws

- Must have a valid driver license
- No motorcycle endorsement required
- No helmet or eyewear requirement
- If scooter is larger than 50cc, has more than 2bhp, or can travel over 30mph, then **motorcycle** rules apply (endorsement, eyewear, and helmet if under 21 or not properly insured)



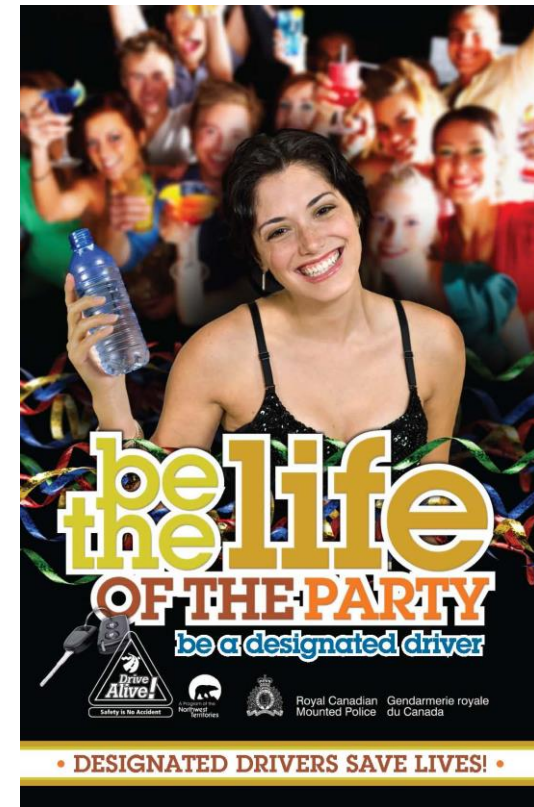
Animals on Campus

- Common animals to see on campus
 - Alligators
 - Bats
 - Turtles
 - Squirrels
 - Raccoons
- Generally do not bother people
- Do NOT touch or feed them
- If one is inside a residence/campus building, becoming a nuisance, injured, or acting strangely, contact UFPD



Alcohol and the Law

- City open container ordinance
- It is a misdemeanor to have alcohol in your possession if you are under 21 years of age
- Don't drink and drive!
 - Have a DD
 - Call a taxi
 - Use SNAP, Later Gator, or Gotcha



Good Samaritan Act

- A person who experiences a drug-related overdose and is in need of medical assistance, or
- A person acting in good faith who seeks medical assistance for an individual experiencing a drug-related overdose,
- May not be charged, prosecuted, or penalized for possession of a controlled substance if the evidence was obtained as a result of the person's seeking medical assistance



**Thank You For Your
Attention And...
Go Gators!**

**University of Florida
Police Department**

Dispatch: (352) 392-1111

CSD: (352) 392-1409

OVS: (352) 392-5648

www.police.ufl.edu

www.facebook.com/UFPolice

